

## MASTERPAV SPEED RAMP

**Masterpav Speed Ramp** is designed to reduce the speed for vehicle traffic in order to improve safety condition. Master Materials provide 2 design of ramps finish. Normally use in car park ramps.



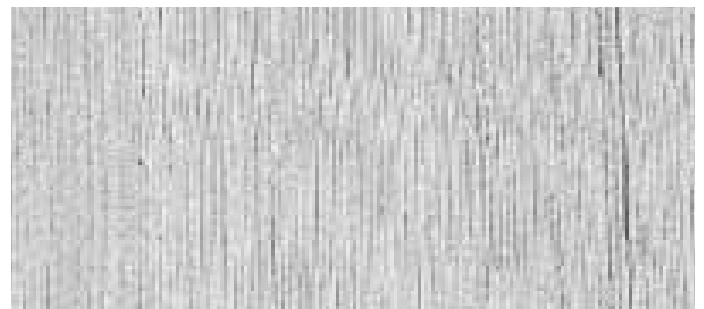
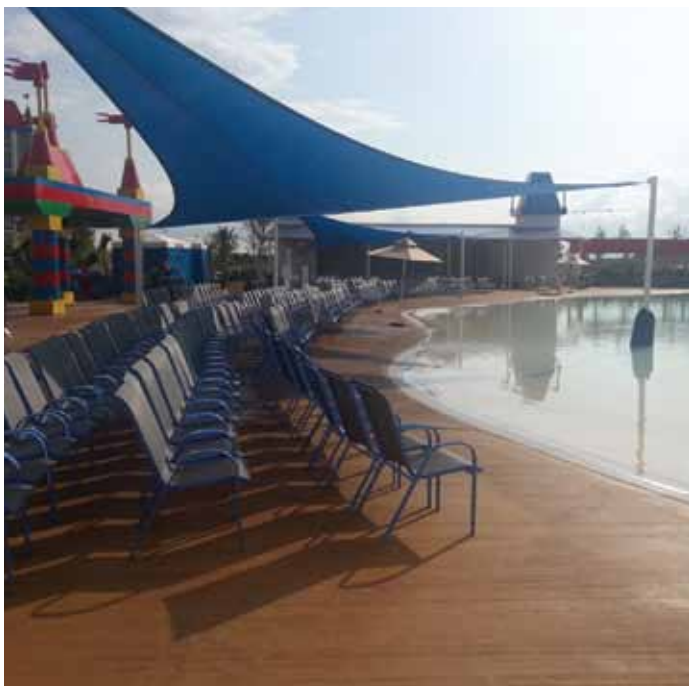
**Straight Groove Line Finish**



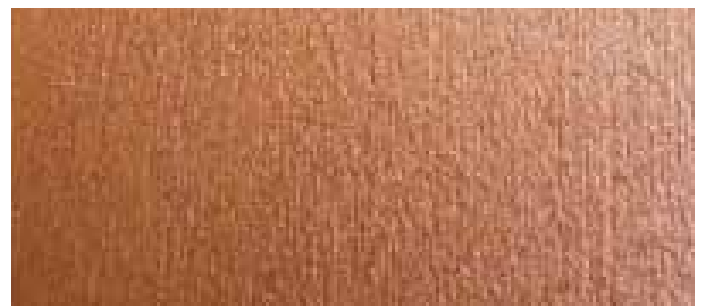
**O-Ring Finish**

## MASTERPAV BROOM FINISH

**Masterpav Broom Finish** can be applied in straight pattern finish, fine or rough finish with a variety of colours. Commonly used in driveways, walkway, patio and carpark.



**Type B5 ROUGH**



**Type B6 FINE**

**Note:**

Product images are for illustrative purposes only and may differ from the actual product or results.